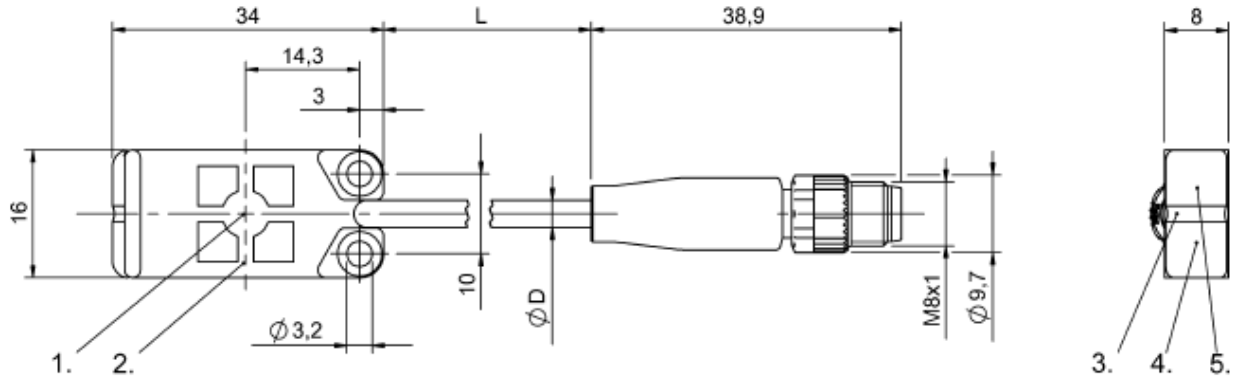


## SK1-8-34/16/8-P-b-O-m2-Y1



1) Sensing surface 2) Housing 3) Cover 4) Power indicator green 5) Function indicator yellow

### Display/Operation

Function indicator	yes
Power indicator	yes
Setting	teachable

### Electrical connection

Cable diameter D	3.40 mm
Cable length	0.3 m
Conductor cross-section	0.14 mm <sup>2</sup>
Connection type	Cable with connector, 0.30 m, PUR
Number of conductors	4
Protection against device mix-ups	yes
Short-circuit protection	yes

### Electrical data

Load capacitance max. at U <sub>e</sub>	0.33 µF
No-load current I <sub>o</sub> max. at U <sub>e</sub>	12.0 mA
Operating voltage U <sub>b</sub>	12...30 VDC
Polarity reversal protected	yes
Rated insulation voltage U <sub>i</sub>	75 V DC
Rated operating current I <sub>e</sub>	50 mA
Rated operating voltage U <sub>e</sub> DC	24 V
Ready delay t <sub>v</sub> max.	200 ms
Repeat accuracy max. (% of S <sub>r</sub> )	5.0 %
Residual current I <sub>r</sub> max.	10 µA
Residual ripple max. (% of U <sub>e</sub> )	10 %
Switching frequency Utilization category	50 Hz DC-13
Voltage drop static max.	1.5 V

### Environmental conditions

Ambient temperature IP rating per IEC 60529	-25...70 °C
Storage temperature	IP67
	-25...85 °C

### Functional safety

MTTF (40 °C)	98 a
--------------	------

### General data

Approval/Conformity	UL Listed
	CE
Basic standard	IEC 60947-5-2
Scope of delivery	Holder
Sensitivity	Switching distance teachable

### Material

Housing material	PP
Material jacket	PUR
Material sensing surface	PP

### Mechanical data

Dimension	34 x 16 x 8 mm
Installation	flush
Tightening torque	0.2 Nm

## SK1-8-34/16/8-P-b-O-m2-Y1

### Output/Interface

Switching output PNP Normally closed (NC)

### Range/Distance

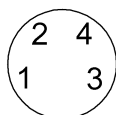
Effective operating distance Sr 8 mm  
 Hysteresis H max. (% of Sr) 15.0 %  
 Measuring range Temperature 1...8 mm  
 drift max. (% of Sr) 20 % [-5...55 °C]

### Remarks

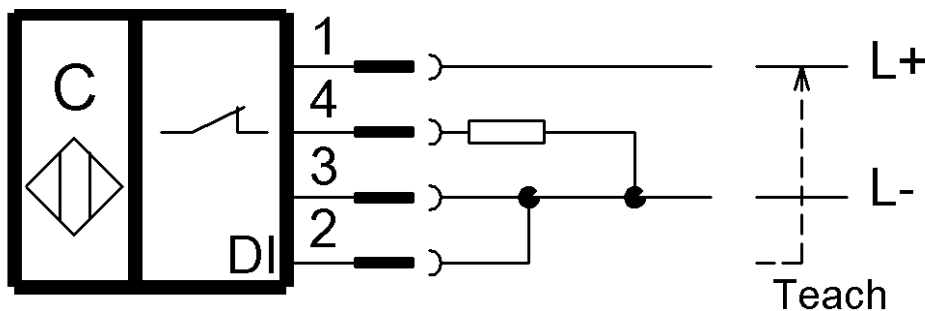
For full calibration connect input DI to L+ for 2...7 seconds. For empty calibration connect to L+ for 7..12 seconds. Input DI can be used for teaching the switching point. In normal operation input DI should be connected continuously to L-.

Specification of the MTTF value and the B10d value do not represent any bin-ding quality and/or life expectancy guarantees.

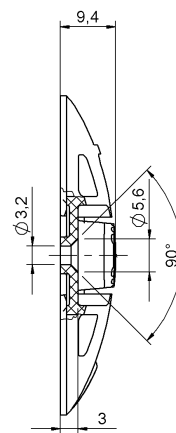
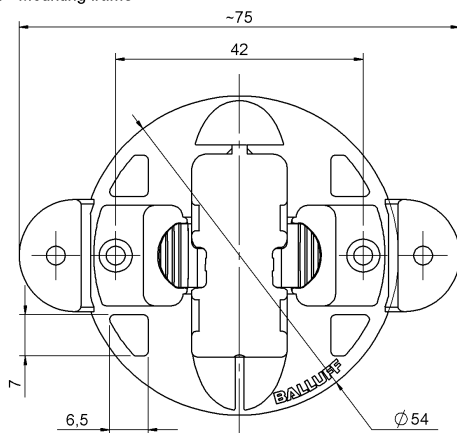
### Connector view



### Wiring Diagram



Zubehör - Halter  
 Accessories - Mounting frame



Werkstoff Halter: PP  
 Material mounting frame: PP